

SEPTEMBER 2015

ENVIRONMENTAL ASSESSMENT PROCESS

SALDANHA BAY
NETWORK STRENGTHENING PROJECT,
WESTERN CAPE PROVINCE



BACKGROUND INFORMATION DOCUMENT

AIM OF THIS BACKGROUND INFORMATION DOCUMENT

This document aims to provide you, as an interested and/or affected party (I&AP), with:

- » An overview of the proposed Saldanha Bay Network Strengthening Project.
- » An overview of the EIA process (including a Scoping Phase and an EIA Phase) and the specialist studies being undertaken to assess the potential environmental impacts associated with the proposed project.
- » Details of how you can become involved in the EIA process, receive information, or raise issues which may concern and/or interest you.

OVERVIEW OF THE PROPOSED PROJECT

As part of the envisaged developments in the Saldanha Bay area, Eskom has been prompted to re-assess the capability of the existing electricity network in the area in order to meet the forecasted load requirements from industrial customers, the Industrial Development Zone (IDZ), local distributors and also to facilitate the integration of renewable generation. Power to the Saldanha Bay area is supplied from Aurora Substation which is located 28km east of Saldanha Bay. Aurora Substation supplies Distribution's Blouwater, Saldanha Steel and Smelter Substations. From the load forecast, it is evident that there will be a constraint at Aurora Substation. The projected new load of approximately 200 MVA that will be realised in the area together with the natural load growth will increase Aurora Substation demand from 517 MVA to approximately 890 MVA in year 2030. The firm capacity in the area will be exceeded in 2018 if the additional loads are to be supplied from Aurora Substation. The transformation capacity is also insufficient to evacuate all of the potential renewable generation planned in the area, amounting to 2 885 MW.

The scope of Saldanha Bay network strengthening project includes the following:

- » Construction of a new 400/132kV Transmission Substation in the Saldanha Bay area with a planned capacity of 3 x 500 MVA transformers. The transmission substation footprint will be 600m x 600m.
- » Construction of a new 132/66kV Distribution Substation near the current Blouwater Substation in the Saldanha Bay area. The distribution substation footprint will be 120m x 120m.
- » The construction of two 400kV power lines (approximately 35 - 40 km) from the Aurora Substation to the new proposed distribution and transmission substations. A servitude of 55m is required for each power line
- » Replacing two of the four existing 250 MVA 400/132kV transformers with 2 x 500 MVA transformers at Aurora Substation.

» Establishing 2 x 132 kV feeder bays around Aurora Substation.

The proposed Distribution substation (Dx), Transmission substation (Tx) and power lines will be located in the Saldanha Bay area, approximately 130km north west of Cape Town, in the Western Cape Province. The location of the proposed substations and power lines will be within 20km from the coast. The closest towns are Saldanha Bay and Vredenburg.

The following properties will potentially be affected by the construction of the proposed power lines and substations (refer to locality map):

RE/129 of farm Yzervarkensrug	Farm 181
3/129 of farm Yzervarkensrug	Farm Waschkliip 183
9/129 of farm Yzervarkensrug	2/184 of farm Kleineberg
RE/6/137 of farm Muishond Fontein	6/185 of Farm 185
RE/139 of farm Klipfontein	7/185 of Farm 185
1/139 of farm Klipfontein	12/185 of Farm 185
3/139 of farm Klipfontein	19/185 of Farm 185
4/139 of farm Klipfontein	RE/187 of farm Langeberg
6/139 of farm Klipfontein	1/187 of farm Langeberg
Adjoining Springfontein 174	4/187 of farm Langeberg
RE/175 of farm Kerschbosch	RE/188 of farm Langeberg
1/175 of farm Kerschbosch	6/188 of farm Langeberg
3/175 of farm Kerschbosch	RE/189 of farm Uyekraal
RE/176 of farm Driehoeks Fontein	1/189 of farm Uyekraal
1/176 of farm Driehoeks Fontein	2/189 of farm Uyekraal
3/176 of farm Driehoeks Fontein	3/189 of farm Uyekraal
RE/177 of farm Springfontein	RE/190 of farm Everts Hope
4/177 of farm Springfontein	1/190 of farm Everts Hope
3/178 of farm Yzerfontein	2/191 of farm Oliphants Kop
5/178 of farm Yzerfontein	4/191 of farm Oliphants Kop
8/178 of farm Yzerfontein	5/191 of farm Oliphants Kop
Farm Zoutekuylen 179	RE/194 of farm Os Fontein
1/180 of farm Groot Springfontein	1/195 of Farm 195
2/195 of Farm 195	Farm 1132
RE/1029 of Farm 1029	Farm 1162
1/1029 of Farm 1029	Farm 1223
Farm 1038	

Alternative substation sites and power line corridors have been identified within a broader study area. These, together with any other feasible alternatives identified through the EIA process, will be assessed and preferred alternatives recommended for implementation.

Should the project be authorised by the National Department of Environmental Affairs (DEA), Eskom will then enter into a negotiation process with each affected landowner. The process of negotiating a servitude is independent of the EIA process, and will be undertaken directly by Eskom.

ENVIRONMENTAL IMPACT ASSESSMENT PROCESS

In terms of the EIA Regulations published in terms of Section 24(5) of the National Environmental Management Act (NEMA, Act No. 107 of 1998), Eskom require authorisation from the National Department of Environmental Affairs (DEA) in consultation with the Western Cape Department of Environmental Affairs and Development Planning (DEA&DP) for the construction and operation of the proposed Dx substation, Tx substation and power lines. In terms of sections 24(5) of NEMA, the EIA Regulations published in GN R982 to GN R985, a Scoping and EIA are required to be undertaken for this proposed project. In order to obtain authorisation, comprehensive, independent environmental studies must be undertaken in accordance with the EIA Regulations.

An EIA is an effective planning and decision-making tool. It allows the potential environmental consequences resulting from a proposed activity to be identified and appropriately managed during its establishment and its operation. It provides the opportunity for the applicant to be fore-warned of potential environmental issues, and allows for resolution of the issue(s) reported on in the EIA report as well as dialogue with I&APs.

The EIA process will be separated into two distinct phases:

1. A **Scoping Phase**, where potential issues associated with the proposed project will be identified, described and evaluated as part of a desktop study. Areas of sensitivity within the study area will be identified and delineated in order to identify suitable sites for the substations and appropriate routes for the power line alignments.
2. An **EIA Phase**, which involves a detailed assessment of potentially significant impacts identified in the Scoping Phase. Practical and achievable mitigation and management measures will be recommended within Draft Environmental Management Programmes (EMPr).

Eskom has appointed **Savannah Environmental**, as the independent environmental consultants, to undertake the required EIA Process to identify and assess all the potential environmental impacts associated with the proposed project, and propose appropriate mitigation and management measures in an Environmental Management Programme (EMPr). As part of these environmental studies, I&APs will be actively involved through the public involvement process also being undertaken by Savannah Environmental.

WHAT ARE THE POTENTIAL ENVIRONMENTAL IMPACTS ASSOCIATED WITH THE PROPOSED PROJECT?

A number of potential environmental impacts associated with the proposed construction of the power lines and substations have been identified at this stage. These potential impacts will be assessed through the following specialist studies:

- » Ecological impact assessment considering impacts on, fauna and flora Avifaunal impact assessment
- » Soils and agricultural potential impact assessment
- » Heritage impact Visual impact assessment
- » Social impact assessment
- » Land use and Town Planning Study

Specialist studies will be informed by existing information, field observations and input from the public participation process. As an I&AP, your input is considered an important part of this process, and we urge you to become involved.

PUBLIC PARTICIPATION PROCESS

The sharing of information forms the basis of the public participation process and offers you the opportunity to become actively involved in the EIA Process from the outset. Comments and inputs from I&APs during the Scoping and the EIA Phases are encouraged in order to ensure that potential impacts are considered within the ambit of the study and all potential alternatives are identified and considered. The public participation process aims to ensure that:

- » Information that contains all the relevant facts in respect of the application is made available to I&APs for review.
- » I&AP participation is facilitated in such a manner that they are provided with a reasonable opportunity to comment on the proposed project.

- » Adequate review periods, as defined in the EIA Regulations, are provided for I&APs to comment on the findings of the draft Scoping and EIA Reports.

In order to ensure effective participation, the public participation process includes the following:

- » Distribution of this Background Information Document at the start of the process.
- » Identification of I&APs including affected and adjacent landowners and occupiers, and Organs of State.
- » Placement of site notices at the affected properties.
- » Placement of advertisements in local newspapers.
- » Compilation of an I&AP database which is updated throughout the EIA Process. All registered I&APs are personally notified at milestones in the EIA process through a stakeholder letter.
- » Release of the Draft Scoping and EIA Reports for public review.
- » Holding public meetings, and focus group meetings at key stages during the process with I&APs to further facilitate the participation process.

YOUR RESPONSIBILITIES AS AN I&AP

In terms of the EIA Regulations, your attention is drawn to your responsibilities as an I&AP:

- » In order to participate in this EIA process, you must register yourself on the project database.
- » You must ensure that any comments regarding the proposed project are submitted within the stipulated timeframes.
- » You are required to disclose any direct business, financial, personal or other interest which that you may have in the approval or refusal of the application for the proposed project.

HOW TO BECOME INVOLVED

1. By responding by phone, fax or e-mail to the invitation for your involvement which has been advertised in newspapers.
2. By returning the reply form to the relevant contact person.
3. By attending the meetings to be held during the course of the process. As a registered I&AP you will automatically be invited to attend these meetings. Dates for public meetings will also be advertised in local newspapers.

4. By contacting the consultants with queries or comments.
5. By reviewing and commenting on the draft Scoping and EIA Reports within the stipulated 30-day review periods.

If you consider yourself an I&AP for this project, we urge you to make use of the opportunities created by the public participation process to provide comment, raise issues and concerns which affect and/or interest you or request further information. Your input into this process forms a key element of the EIA process.

By completing and submitting the accompanying reply form, you automatically register yourself as an I&AP for this project, and are ensured that your comments, concerns or queries raised regarding the project will be noted.

COMMENTS AND QUERIES

Direct all comments, queries or responses to:

Gabriele Wood of Savannah Environmental
PO Box 148, Sunninghill, Johannesburg, 2157
Phone: 011 656 3237
Fax: 086 684 0547
E-mail: gabriele@savannahsa.com

To view project documentation, visit
www.savannahSA.com/projects

Saldanah Bay Network Strengthening

Proposed Power line, Dx and Tx Substation
Locality Map

Legend

- Existing Substation
- Existing Power Line
- Regional road
- Secondary road
- Perennial river
- Non perennial river
- ▭ Study Area
- ▭ Potentially Impacted Farm Portions

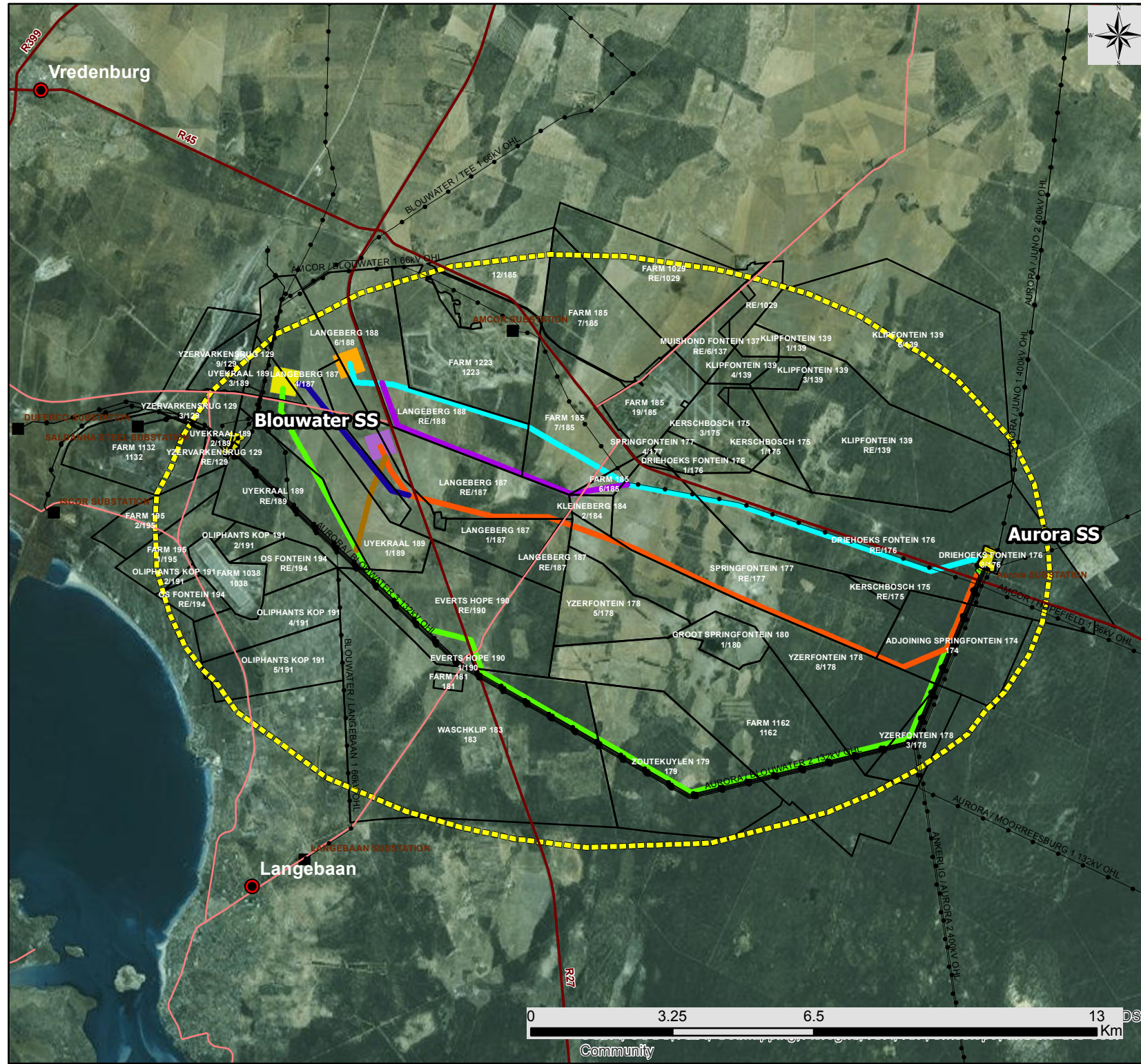
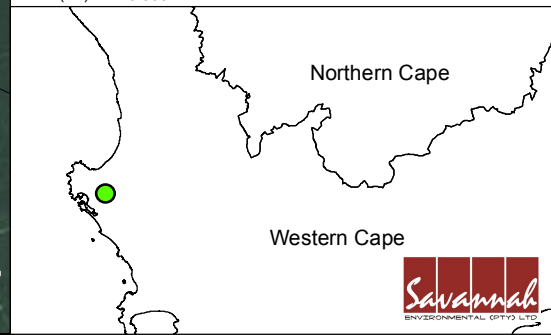
Potential power line route alternatives:

- Alternative 1
- Alternative 2
- Alternative 3
- Alternative 4
- Alternative 5
- Alternative 6

Potential Transmission SS sites

- ▭ Site A
- ▭ Site B
- ▭ Site C

Projection: LO19 WGS84
Map ref: Saldanah Bay power line & SS_Locality Map_01.09.15
Scale (A4): 1:120 000



SEPTEMBER 2015

OMGEWINGSASSESSERINGSPROES

SALDANHABAAI
NETWERKVERSTERKINGSPROJEK,
WES-KAAP PROVINSIE



AGTERGRONDINLIGTINGSDOKUMENT

DOELWIT VAN HIERDIE AGTERGRONDINLIGTINGSDOKUMENT

Hierdie dokument beoog om u, as belanghebbende en/of geaffekteerde party (B&GP), te voorsien van:

- » 'n Oorsig van die voorgenome Saldanhaabaai Netwerkversterkingsprojek.
- » 'n Oorsig van die omgewingsimpakassesseringsproses (OIA-proses) (insluitende 'n omvangbepalingsfase en 'n OIA-fase) en die spesialisstudies wat onderneem word om die potensiële omgewingsimpakte te assessee wat met die voorgenome projek geassosieer word.
- » Besonderhede van hoe u by die OIA-proses betrokke kan raak, inligting kan ontvang, of kwessies kan opper wat u moontlik raak en/of interesseer.

OORSIG VAN DIE VOORGENOME PROJEEK

As deel van die voorgenome ontwikkelings in die Saldanhaabaai-area is Eskom genoop om weer die vermoë van die bestaande elektrisiteitsnetwerk in die area te beoordeel om te voldoen aan die beraamde ladingsvereistes van nywerheidsklante, die industriële ontwikkelingsone (IOS) en plaaslike verspreiders asook om die integrasie van hernubare opwekking te fasiliteer. Die Saldanhaabaai-area se krag word verskaf vanaf die Aurorasubstasie, wat 28km oos van Saldanhaabaai af geleë is. Die Aurora-substasie bedien die Blouwater-, Saldanha Staal- en Smeltersubstasies. Die ladingsberaming dui daarop dat daar 'n beperking by die Aurora-substasie sal ontstaan. Die beraamde nuwe lading van nagenoeg 200 MVA wat in die area gerealiseer sal word tesame met die natuurlike ladingstoename sal die Aurora-substasie se vraag van 517 MVA tot nagenoeg 890 MVA in die jaar 2030 laat styg. Die ferm kapasiteit in die area sal in 2018 oorskry word indien die bykomende ladings vanaf die Aurora-substasie verskaf moet word. Die transformasiekapasiteit is ook onvoldoende vir die evacuatie van al die potensiële hernubare opwekking wat in die area beplan word, wat 2 885 MW beloop.

Die omvang van die Saldanhaabaai Netwerkversterkingsprojek sluit die volgende in:

- » Oprigting van 'n nuwe 400/132kV transmissiesubstasie in die Saldanhaabaai-area met 'n beplande kapasiteit van 3 x 500 MVA transformators. Die transmissiesubstasie se oppervlak sal 600m x 600m wees.
- » Die oprigting van 'n nuwe 132/66kV distribusiesubstasie naby die huidige Blouwatersubstasie in die Saldanhaabaai-area. Die distribusiesubstasie se oppervlak sal 120m x 120m wees.
- » Die oprigting van twee 400kV kraglyne (nagenoeg 35 - 40 km) vanaf die Aurorasubstasie na die nuwe voorgenome distribusie- en transmissiesubstasies. 'n Serwituut van 55m word vir elke kraglyn benodig.
- » Vervanging van twee van die vier bestaande 250 MVA 400/132kV transformators met

2 x 500 MVA transformators by die Aurora-substasie.

- » Oprigting van 2 x 132 kV toevoerpunte rondom die Aurora-substasie.

Die voorgename distribusiesubstasie (Dx), transmissiesubstasie (Tx) en kraglyne sal geleë wees in die Saldanha-baai-area, nagenoeg 130km noordwes van Kaapstad, in die Wes-Kaap Provinsie. Die ligging van die voorgename substasies en kraglyne sal binne 20km vanaf die kus wees. Die naaste dorpe is Saldanha-baai en Vredenburg.

Die volgende eiendomme sal potensieel deur die oprigting van die voorgename kraglyne en substasies geaffekteer word (verwys na liggingskaart):

RE/129 van plaas Yzervarkensrug	5/178 van plaas Yzerfontein
3/129 van plaas Yzervarkensrug	8/178 van plaas Yzerfontein
9/129 van plaas Yzervarkensrug	Plaas Zoutekuylen 179
RE/6/137 van plaas Muishond Fontein	1/180 van plaas Groot Springfontein
RE/139 van plaas Klipfontein	Plaas 181
1/139 van plaas Klipfontein	Plaas Waschklip 183
3/139 van plaas Klipfontein	2/184 van plaas Kleineberg
4/139 van plaas Klipfontein	6/185 van plaas 185
6/139 van plaas Klipfontein	7/185 van plaas 185
Adjoining Springfontein 174	12/185 van plaas 185
RE/175 van plaas Kerschbosch	19/185 van plaas 185
1/175 van plaas Kerschbosch	RE/187 van plaas Langeberg
3/175 van plaas Kerschbosch	1/187 van plaas Langeberg
RE/176 van plaas Driehoeks Fontein	4/187 van plaas Langeberg
1/176 van plaas Driehoeks Fontein	RE/188 van plaas Langeberg
3/176 van plaas Driehoeks Fontein	6/188 van plaas Langeberg
RE/177 van plaas Springfontein	RE/189 van plaas Uyekraal
4/177 van plaas Springfontein	1/189 van plaas Uyekraal
3/178 van plaas Yzerfontein	2/189 van plaas Uyekraal
3/189 van plaas Uyekraal	2/195 van plaas 195
RE/190 van plaas Everts Hope	RE/1029 van plaas 1029
1/190 van plaas Everts Hope	1/1029 van plaas 1029
2/191 van plaas Oliphants Kop	Plaas 1038
4/191 van plaas Oliphants Kop	Plaas 1132
5/191 van plaas Oliphants Kop	Plaas 1162
RE/194 van plaas Os Fontein	Plaas 1223
1/195 van plaas 195	

Alternatiewe substasieterreine en kraglyndeurgange is binne 'n wyer studie-area geïdentifiseer. Dit, tesame met enige ander lewensvatbare alternatiewe wat deur die OIA-proses geïdentifiseer word, sal geassesseer word en verkose alternatiewe sal vir implementering aanbeveel word.

Indien die projek deur die Nasionale Departement van Omgewingsake (NDO) gemagtig word, sal Eskom 'n onderhandelingsproses met elke geaffekteerde grondeienaar loods. Die proses van die onderhandeling vir serwitute is onafhanklik van die OIA-proses en sal regstreeks deur Eskom onderneem word.

OMGEWINGSIMPAKASSESSERINGSPROSES

Ingevolge die OIA Regulasies wat kragtens Artikel 24(5) van die Wet op Nasionale Omgewingsbestuur (WNOB, Wet Nr. 107 van 1998) gepubliseer is, benodig Eskom magtiging van die NDO in raadpleging met die Wes-Kaapse Departement van Omgewingsake en Ontwikkelingsbeplanning (NDO&OP) vir die oprigting en bedryf van die voorgename Dx-substasie, Tx-substasie en kraglyne. Kragtens artikel 24(5) van WNOB, die OIA Regulasies wat in GN R982 tot GN R985 gepubliseer is, word vereis dat 'n omvangbepaling en OIA vir hierdie voorgename projek onderneem word. Ten einde magtiging te verkry, moet omvattende, onafhanklike omgewingstudies ooreenkomstig die OIA Regulasies onderneem word.

'n OIA is 'n effektiewe beplannings- en besluitnemingsmiddel. Dit maak dit moontlik dat die potensiële omgewingsgevolge van 'n voorgename aktiwiteit tydens die oprigting en bedryf daarvan geïdentifiseer en op toepaslike wyse bestuur word. Dit bied aan die aansoeker die geleentheid om vooraf gewaarsku te word van potensiële omgewingskwessies, en dit maak dit moontlik dat die kwessie(s) waaroor in die OIA-verslag gerapporteer word, opgelos word en dat gesprekvoering met B&GPs kan plaasvind.

Die OIA-proses sal in twee afsonderlike fases verdeel word:

1. 'n **Omvangbepalingsfase**, waar potensiële kwessies wat met die voorgename projek geassosieer word, geïdentifiseer, beskryf en geëvalueer word as deel van 'n teoretiese studie. Sensitiewe areas in die studie-area sal geïdentifiseer en afgebaken word ten einde geskikte terreine vir die substasies en geskikte roetes vir die kraglyninlynstelling te identifiseer.
2. 'n **OIA-fase**, wat 'n gedetailleerde assessering behels van potensiële beduidende impakte wat in die omvangbepalingsfase geïdentifiseer is. Praktiese en haalbare omgewingsmatigings- en bestuursmaatreëls sal in Konsepomgewingsbestuurprogramme (KOBPr) aanbeveel word.

Eskom het **Savannah Environmental** as die onafhanklike omgewingskonsultante aangestel om die vereiste OIA-proses te onderneem om al die potensiele omgewingsimpakte te identifiseer en assesseer wat met die voorgename projek geassosieer word, en toepaslike omgewingsmatigings- en bestuursmaatreëls in 'n Omgewingsbestuursprogram (OBPr) voor te stel. As deel van hierdie omgewingstudies sal B&GPs aktief betrokke wees by die openbare betrekingsproses wat ook deur Savannah Environmental onderneem word.

WAT IS DIE POTENSIELE OMGEWINGSIMPakte WAT MET DIE VOORGENOME PROJEK GEASSOSIEER WORD?

Daar is in hierdie stadium 'n aantal potensiele omgewingsimpakte geïdentifiseer wat met die voorgename oprigting van die kraglyne en substasies geassosieer kan word. Hierdie potensiele impakte sal deur die volgende spesialisstudies geassesseer word:

- » Ekologiese impakassessering wat impakte op fauna en flora oorweeg
- » Avifauna-impakassessering
- » Assessering van potensiele impak op grond en landbou
- » Erfenisimpak
- » Assessering van visuele impak
- » Assessering van maatskaplike impak
- » Grondgebruik- en stadsbeplanningstudie

Spesialisstudies sal toegelig word deur bestaande inligting, veldwaarnemings en insette uit die openbare deelnemingsproses. As 'n B&GP word u insette as 'n belangrike deel van hierdie proses beskou, en ons moedig u aan om betrokke te raak.

OPENBARE DEELNEMINGSPROSES

Die deel van inligting vorm die grondslag van die openbare deelnemingsproses en bied u die geleentheid om uit die staanspoor aktief by die OIA-proses betrokke te raak. Kommentaar en insette van B&GPs tydens die omvangbepalings- en OIA-fase word aangemoedig ten einde te verseker dat potensiele impakte binne die omvang van die studie oorweeg word en dat alle potensiele alternatiewe geïdentifiseer en oorweeg word. Die openbare deelnemingsproses is daarop gemik om te verseker dat:

- » Inligting wat al die tersaaklike feite ten opsigte van die aansoek bevat vir oorsig aan B&GPs beskikbaar gestel word.
- » B&GP-deelname sodanig gefasiliteer word dat 'n redelike geleentheid aan hulle gebied word om kommentaar oor die voorgename projek te lewer.

- » Voldoende oorsigtydperke soos in die OIA Regulasies gedefinieer word aan B&GPs gebied word om oor die bevindinge van die konsepomvangbepalingsverslag en konsep-OIA-verslag kommentaar te lewer.

Ten einde effektiewe deelname te verseker, sluit die openbare deelnemingsproses die volgende in:

- » Verspreiding van hierdie agtergrondinligtingsdokument aan die begin van die proses.
- » Identifisering van B&GPs, insluitende geaffekteerde en aanliggende grondeienaars en grondbewoners, en staatsinstansies.
- » Plasing van terreinkennisgewings by die geaffekteerde eiendomme.
- » Plasing van advertensies in plaaslike koerante.
- » Opstel van 'n B&Gpdatabasis wat regdeur die OIA-proses bygewerk word. Alle B&GPs word persoonlik by die bereiking van mylpale in die OIA-proses deur middel van 'n belanghebbendebrief in kennis gestel.
- » Uitreiking van die Konsepomvangbepalingsverslag en Konsep-OIA-verslag vir openbare oorsig.
- » Die hou van openbare vergaderings en fokusgroepvergaderings op sleutelstadiums gedurende die proses met B&GPs om die deelnemingsproses verder te fasiliteer.

U VERANTWOORDELIKHEDE AS B&GP

Kragtens die OIA-regulasies word u aandag op u verantwoordelikhede as 'n B&GP gevestig:

- » Ten einde aan hierdie OIA-proses deel te neem, moet u op die projekdatabasis registreer.
- » U moet toesien dat enige kommentaar rakende die voorgename projek binne die aangeduide tydperke ingedien word.
- » Daar word van u vereis om enige direkte besigheids-, finansiële, persoonlike of ander belange openbaar te maak wat u moontlik by die goedkeuring of afkeuring van die aansoek vir die voorgename projek het.

HOE OM BETROKKE TE RAAK

1. Deur per telefoon, faks of epos te antwoord op die uitnodiging om betrokke te raak wat in koerante geadverteer is.
2. Deur die responsvorm aan die betrokke kontakpersoon terug te stuur.
3. Deur die vergaderings by te woon wat in die loop van die proses gehou word. As geregistreerde B&GP sal u outomaties uitgenooi word om hierdie vergaderings by te woon. Datums vir openbare vergaderings sal ook in plaaslike koerante geadverteer word.

4. Deur die konsultante met navrae of kommentaar te kontak.
5. Deur die konsepomvangbepalingsverslag en konsep-OIA-verslag binne die aangeduide 30-dag-oorsigtydperk na te gaan en daarop kommentaar te lewer.

Indien u uself as 'n B&GP beskou vir hierdie projek, moedig ons u aan om gebruik te maak van die geleenthede wat deur die openbare deelnemingsproses geskep is om kommentaar te lewer en kwessies en kwellings te opper wat u affekteer en/of interesseer of om verdere inligting aan te vra. U insette in hierdie proses maak 'n sleutelement van die OIA-proses uit.

Deur die gepaardgaande responsvorm in te vul en in te dien, sal u outomaties as 'n B&GP vir hierdie projek geregistreer word en sal u verseker dat u kommentaar, kwellings of navrae insake die projek aangeteken word.

KOMMENTAAR EN NAVRAE

Rig alle kommentaar, navrae of antwoorde aan:

Gabriele Wood van Savannah Environmental
Posbus 148, Sunninghill, Johannesburg, 2157
Telefoon: 011 656 3237
Faks: 086 684 0547
E-pos: gabriele@savannahsa.com

Vir dokumentasie wat met die projek gepaardgaan, besoek
www.savannahSA.com

Saldanah Bay Network Strengthening

Proposed Power line, Dx and Tx Substation
Locality Map

Legend

- Existing Substation
- Existing Power Line
- Regional road
- Secondary road
- Perennial river
- - - Non perennial river
- ▭ Study Area
- ▭ Potentially Impacted Farm Portions

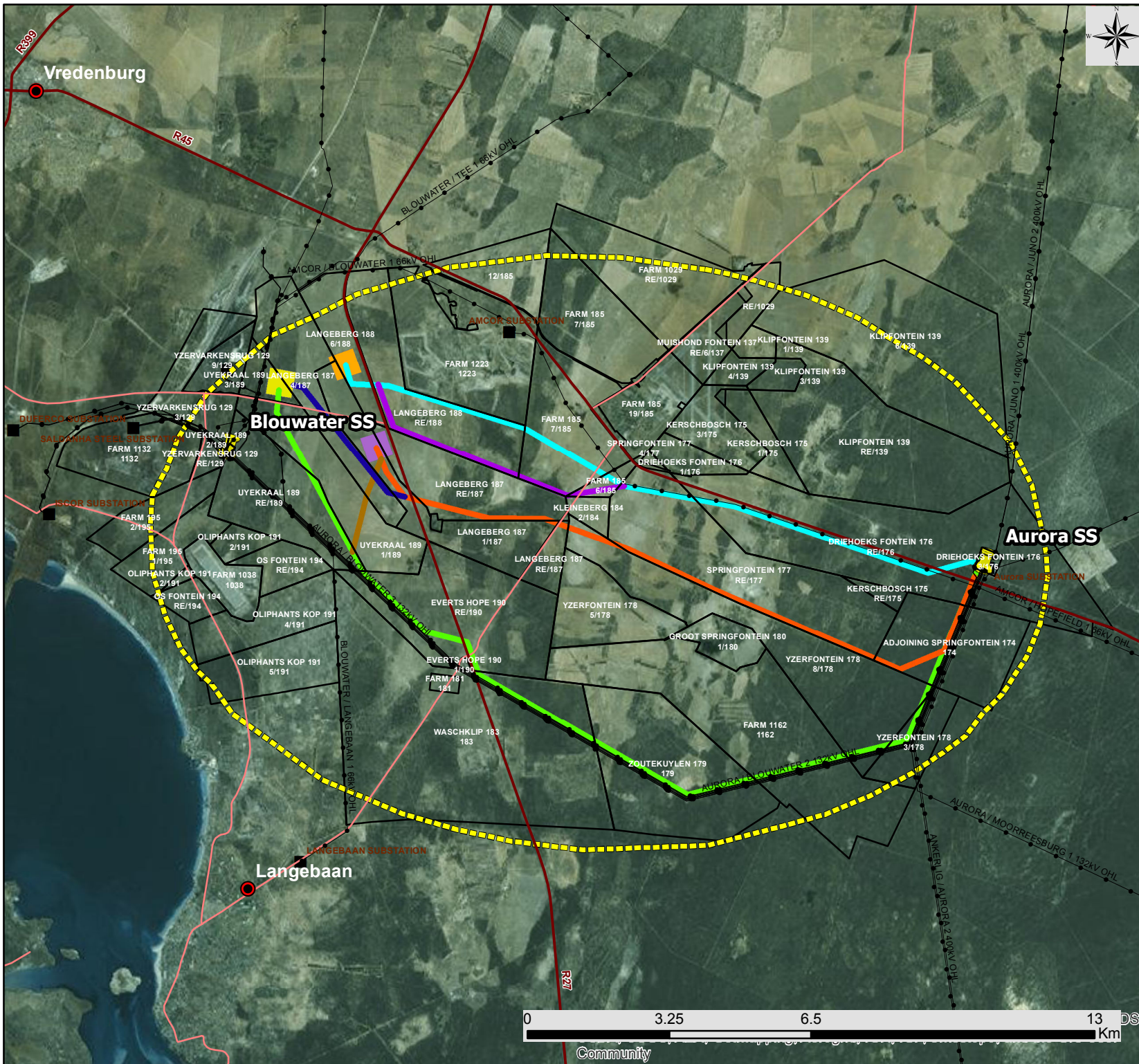
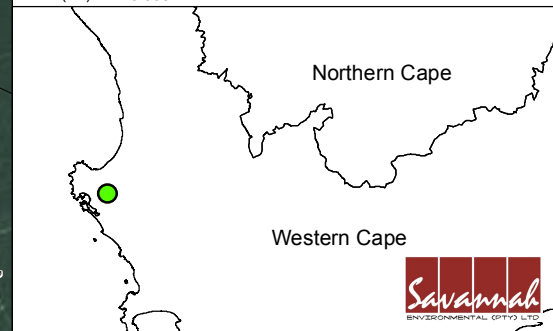
Potential power line route alternatives:

- Alternative 1
- Alternative 2
- Alternative 3
- Alternative 4
- Alternative 5
- Alternative 6

Potential Transmission SS sites

- ▭ Site A
- ▭ Site B
- ▭ Site C

Projection: LO19 WGS84
Map ref: Saldanah Bay power line & SS_Locality Map_01.09.15
Scale (A4): 1:120 000



Community